



Big Bend

SHELLFISH TRAIL

WORKING WATERFRONT
COMMUNITIES

DIXIE, LEVY, JEFFERSON & TAYLOR COUNTIES – FLORIDA



Working Waterfronts in Coastal Communities

The Big Bend has a long history of natural resource dependence that dates to prehistory. Large Indian mounds scattered among the islands testify to the early inhabitants' reliance upon shellfish for their sustenance. The waters surrounding the area's coastal communities have historically been tied to their economic survival. Oysters, crabs, shrimp and fish have all crossed docks from Steinhatchee to Yankeetown at one time or another in abundance. But since 1995, when a statewide gill net ban was imposed, harvesting of mullet and other marine fish, as well as a "way of life," came to an end. Today, clam aquaculture has replaced gill net fishing as the mainstay for many watermen. They still pursue mullet, especially during roe season, but now with a cast net to land this well-known southern delight. Far more common today are boats commonly called "bird dogs" converted to work the clam farms.

As you stroll the neighborhoods of these coastal towns, a common site will be stacked crab traps, wooden or plastic for stone crab and wire for blue crab. And you will occasionally discover clam bags laid across driveways. It is the easiest way to crush the fouling organisms that attach themselves over time to the bags. Although not harvested in the abundance of the past, the Big Bend remains a haven for fresh seafood. Succulent clams, freshly shucked oysters, soft shell crab or stone crab claws can be found on many menus and are fresh and delicious. With every bite, a taste of the sea and sense of history.



The Big Bend's Environmental Qualities

The Big Bend coastal region is one of the largest and most productive areas for marine shellfish in the Gulf of Mexico. The region supports the second largest continuous area of seagrasses in the eastern Gulf, making it one of the most pristine places in Florida. The shoreline is predominately salt marsh and tidal creeks with only a few beaches, protected by a myriad of oyster bars and rocky islands. These habitats provide essential nearshore nurseries for many commercially and recreationally important species during their juvenile stages. The coastal waters are surrounded by a mix of federal and state owned uplands, as well as conservation areas and easements, providing a significant buffer to encroaching development while protecting shellfish and other marine resources from adverse land-use practices. This contributes to the uniqueness of the region, warranting its nickname "The Nature Coast."

Things YOU can do to help promote Clean Coastal Waters:

- Install advanced septic tanks in coastal areas where sewer systems are not available.
- Promote landscaping that eliminates or reduces the need for irrigation and fertilizers.
- Encourage agriculture activities to follow Best Management Practices.
- Call for living shorelines instead of seawalls.
- Participate in coastal cleanups and recycle.
- Educate residents and visitors about the importance of clean coastal waters.

CLEAN WATERS...SAFE SHELLFISH

Molluscan shellfish are filter feeders, taking in large quantities of water during feeding. Since these shellfish resemble the coastal waters in which they grow, harvesting can only take place in the cleanest of waters. Oysters, clams and mussels are often eaten raw or partially cooked, and the entire animal, excluding the shell, is consumed. Since only the muscle meat of Bay Scallops is consumed, they can be harvested outside of state shellfish harvesting areas. In Florida, national regulatory standards are followed by the Florida Department of Agriculture and Consumer Services (FDACS). This agency is responsible for monitoring, classifying and managing the waters to ensure shellfish harvested are safe and wholesome. There are five designated shellfish harvesting areas (SHAs) in the Big Bend region; each operates under a management plan based on either rainfall or river levels as freshwater drainage from land can introduce contaminants into adjacent coastal waters. Under these plans, FDACS can temporarily close an area for harvest before the shellfish become unsafe to consume.


To locate maps of each SHA and find out whether an area is open or closed to recreational or commercial harvest, visit the FDACS Division of Aquaculture's website:

www.FreshfromFlorida.com/Divisions-Offices/Aquaculture
or contact their local office in Cedar Key at 352.543.5181.



Photo Spots

Throughout this pristine coastal area there are many places to take great photos as you enjoy the Big Bend Shellfish Trail. Upload your photos to [#floridashellfishtrail](#) and share what you are learning as you visit communities along the trail.

Take advantage of the camera icon  that highlights areas where you can view working waterfronts of shellfish farmers/fishermen, beautiful coastal landscapes and vistas. Many of the communities recycle clam and oyster shells for driveways, parking lots, sidewalks and for arts & crafts.

The uniqueness of these beautiful coastal villages and their cultural heritage is one that is ready to be discovered! The Big Bend Shellfish Trail is where you can learn more about Florida shellfish, aquaculture, sustainable environments that protect the waters, where to EAT and where to BUY (retail) Big Bend Shellfish. For the fishermen in your group, this area of Florida has amazing Big Reds, Trout, Tarpon and more. There are many cozy accommodations like bed and breakfasts, fish camps and hotel/motels available throughout the trail region.

It's all waiting for you to explore! Plan your educational and travel adventure to this unique part of Florida. Contact one of the local chambers or tourist development offices listed in the box below for more information on how to visit the Big Bend Shellfish Trail or to have a map mailed to you.



LOOK FOR THIS ICON  FOR PHOTO SPOTS ALONG THE BIG BEND SHELLFISH TRAIL. SHARE YOUR IMAGES AT [#FLORIDASHELLFISHTRAIL](#)





COMMERCIAL SHELLFISH AQUACULTURE IN THE BIG BEND

Shellfish farming is a relatively new industry in Florida. During the 1990s a transition to clam farming as an alternative employment opportunity for former fishermen was facilitated through job retraining programs. Today, about 150 growers harvest 100-125 million hard clams annually on 800 acres of submerged land leases located off the coasts of Levy and Dixie Counties. It is estimated that Cedar Key produces 80% or more of the state's crop with a gross revenue impact of \$35 million to the region's economy. Diversification of crops is ongoing as growers are also culturing oysters and sunray venus clams.

WHERE CAN YOU LEARN MORE ABOUT SHELLFISH AQUACULTURE?

FWC SEN. GEORGE KIRKPATRICK MARINE LAB 📷

Leslie Sturmer, University of Florida-IFAS Shellfish Aquaculture Extension Program
11350 SW 153rd Ct, Cedar Key, 32625 • 352.543.5057 • LNST@ufl.edu

NATURE COAST BIOLOGICAL STATION 📷

552 1st St, Cedar Key, 32625 • 352.222.8585

For tours of clam farms and shore-based businesses:

CAPTAIN BOBBY WITT • CLAM FARM TOUR 📷

Cedar Key, 32625 • 352.212.2555 (*call to schedule boat trips*)

SOUTHERN CROSS SEA FARMS 📷

12170 SR 24, Cedar Key, 32625 • 352.543.5980 • www.clambiz.com
southerncrossclams@gmail.com

Free tours every Friday at 1:00 pm from Nov–May, call for group bookings.

Also visit these informative websites:

- Online Resource Guide for Florida Shellfish Aquaculture • shellfish.ifas.ufl.edu
- Florida Department of Agriculture and Consumer Services
www.FreshfromFlorida.com/Divisions-Offices/Aquaculture
- Florida Clams • www.FlaClams.com

Species found in the Big Bend Region



BAY SCALLOPS, *Argopecten irradians*, are bivalve mollusks that live in seagrass meadows in shallow water. Scallops were historically abundant throughout much of Florida's coastal waters but are now mostly found in Big Bend waters, where vast seagrass meadows still support healthy bay scallop populations. Bay scallops can only be harvested recreationally in Florida. Scalloping is fun for the whole family and recreational scallop season is normally open from the last Saturday in June through the third Saturday in September. Popular scalloping areas in the Big Bend include areas off Taylor and Dixie Counties, especially Steinhatchee, Keaton Beach, and Horseshoe Beach. Check out www.flseagrant.org/fisheries/scalloping/ for more information, including scalloping maps and tips for getting prepared for your scalloping trip. When searching for scallops, be sure to protect the seagrasses on which scallops and many other organisms depend by being a seagrass safe boater, more at www.beseagrasssafe.com.



BLUE CRABS, *Callinectes sapidus*, are found in coastal areas from Canada to South America and are one of the most recognizable and iconic seafood species in the United States. The Big Bend region produces up to one third of the annual commercial blue crab harvest in Florida. Blue crabs can be harvested recreationally with traps, dip nets, or hook and line almost year-round in Florida. Female crabs without eggs are legal to harvest but it is considered a good conservation practice to release females unharmed. Blue crabs can be purchased live and steamed at home with your favorite seasoning or steamed in the market before taking home. Soft shell crabs are blue crabs that have molted by shedding their shell. Crabs that are ready to molt (called "peelers") are held in tanks and harvested immediately after molting before the new shell can harden — they can be eaten whole and are considered a delicacy.



HARD CLAMS, *Mercenaria mercenaria*, are marine mollusks that support an important aquaculture industry in Levy and Dixie Counties. The area's warm waters and high natural productivity allow for fast growth and continuous production. Clams are benthic, or bottom-dwelling, and feed by filtering microscopic plants (algae) and nutrients from the water. Their heavy shells are connected with a strong hinge, which allows clams (like oysters) to remain closed for days in refrigerated storage. Most cultured hard clams are sold as live shellstock (both shells intact) and are shipped to markets fresh under refrigerated conditions. Several sizes (littleneck, pasta) are available year round for steaming, roasting or grilling. Natural populations of the southern quahog, *Mercenaria campechiensis*, are recreationally harvested primarily in the Suwannee Sound area; their meats are usually stripped for frying or minced for chowders.

RECREATIONAL HARVESTING OF SHELLFISH

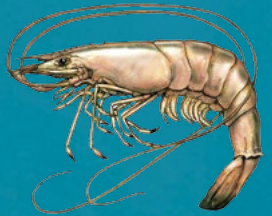
Rules pertaining to both commercial and recreational harvest of shellfish in the Big Bend include limits on size, bag (amount) and catch, as well as gear restrictions.

For most current regulations, visit Florida Fish and Wildlife Conservation Commission:

www.myfwc.com/fishing/saltwater/recreational



OYSTERS have a long history as a favored food in the Big Bend region. Oysters flourish in the inshore waters where nutrient-rich fresh waters meet coastal saltwater. The Eastern oyster, *Crassostrea virginica*, grows rapidly and reaches market size (minimum 3” shell length) in less than two years. In Levy and Dixie Counties, oysters are extensively harvested from natural reefs by fishermen using long-handled tongs from small boats or by hand during “pick up” (extremely low) tides. Around 175,000 pounds are commercially landed annually at a dockside value of over \$1 million (2015). Oysters are enjoyed raw on the half shell or roasted and grilled in their shells. Shucked meats are typically fried but can be prepared in a variety of ways. People with compromised immune systems are at high risk and should avoid consumption of raw oysters. For more information, go to www.BeOysterAware.com.



SHRIMP are the most popular seafood in the United States. While the overwhelming majority of shrimp consumed is imported and farm-raised, the Big Bend supports a wild-caught industry. Over 100,000 pounds of these delicious crustaceans are harvested annually. They are harvested under strict environmental regulations using nets equipped with turtle-excluder and by-catch-reduction devices. There are several types of wild shrimp, *Litopenaeus*, found in the waters of the Big Bend. Pink (also locally known as “hoppers”), brown (“brownies”) and white shrimp are natural, flavorful and of premium quality. While each of these species have specific times of the year when they can be purchased fresh, shrimp can be purchased frozen year round. Over 125,000 pounds of shrimp are also harvested annually using small trawls for the lucrative live bait industry.



STONE CRABS, *Menippe mercenaria*, are one of Florida’s most sought-after delicacies, even though they were once considered nuisance catch by lobster fishermen. Stone crabs can be harvested commercially or recreationally from October 15 through May 15. Baited traps are the most common method for harvesting stone crabs for both commercial and recreational fishers, though some harvest them by hand using SCUBA. In Florida, only the claws (at least 2 ¾” in length) of males and non-egg-bearing females are legal to harvest. The crab must be returned to the water and it is considered best practice to only remove one claw, though it is legal to remove both as long as they are legal size. Fresh stone crab claws are typically available in seafood markets throughout Florida during the open season. Stone crab claws are easy to recognize — bright orange-red with dark purple or black tips — and house meat that is delicate and sweet.

HOW TO BUY, HANDLE, STORE & COOK SHELLFISH

For information on buying, handling and cooking shellfish,
visit Florida Department of Agriculture and Consumer Services:

www.FreshfromFlorida.com/Division-Offices/Marketing-and-Development

Sponsors

Support for this project is provided by The Conservation Fund, a national organization that makes conservation work for America. By creating solutions that make environmental and economic sense, the Fund is redefining conservation to demonstrate its essential role in our future prosperity. Top-ranked for efficiency and effectiveness, the Fund has worked in all 50 states to protect more than 7.8 million acres of land since 1985, including 117,600 acres of working forestry, recreational lands, wildlife habitat, and cultural resources across Florida.

THE
CONSERVATION FUND

www.conservationfund.org



Dixie County Tourist Development
www.VisitDixie.com | 352.498.1403



monticellojeffersonfl.com | 850.997.5552



LEVY COUNTY
VISITORS BUREAU

www.VisitLevy.com | 877.387.5673



www.taylorcountychamber.com | 850.584.366

UF | IFAS
UNIVERSITY of FLORIDA





RESTAURANTS

Check with your server for availability of local shellfish.

DIXIE COUNTY

- 1 WHO DAT'S RESTAURANT AT GOOD TIMES MOTEL & MARINA** 📷
7022 SW 358 Hwy, Steinhatchee, 32359 • 352.498.8088
- 2 SALT CREEK RESTAURANT** 📷
23440 SE Hwy 349, Suwannee, 32692 • 352.542.7072
- 3 SUWANNEE MARINA AND CAFE** 📷
49 SE 903 Ave, Suwannee, 32692 • 352.542.9159
- 4 SHRIMP BOAT RESTAURANT** 📷
110 Main St, Horseshoe Beach, 32648 • 352.498.3546
- 5 LILLY CREEK RESTAURANT**
12373 Hwy 351, Horseshoe Beach, 32648 • 352.498.7515
- 6 MAX AND RUBY'S BOILING POT**
16368 US 19, Cross City, 32628 • 352.498.3994
- 7 PUTNAM LODGE RESTAURANT**
15487 NW Hwy 19, Cross City, 32628 • 352.440.0414
- 8 CYPRESS INN RESTAURANT**
15568 US 19, Cross City, 32628 • 352.498.7211
- 9 DIXIE DINER**
16840 US 19, Cross City, 32628 • 352.498.8008

JEFFERSON COUNTY

- 10 BRICK HOUSE EATERY**
190 N. Jefferson St, Monticello, 32344 • 850.997.2100
- 10A THE REV CAFÉ**
180 S. Jefferson St, Monticello, 32344 • 850.629.0138

LEVY COUNTY

- 11 AWAY FROM THE WORLD CAFÉ** 📷
360 Dock St, Cedar Key, 32625 • 352.477.5008
- 12 ANNIE'S CAFE** 📷
Hwy 24 and 6th St, Cedar Key, 32625 • 352.543.6141
- 13 83 WEST** 📷
310 Dock St, Cedar Key, 32625 • 352.325.3404
www.83westcedarkey.com
- 14 BIG DECK RAW BAR** 📷
331 Dock St, Cedar Key, 32625 • 352.543.9992
- 15 BLUE DESERT CAFE** 📷
12518 SR 24, Cedar Key, 32625 • 352.543.9111
- 16 CARLIN'S WATERFRONT STEAK HOUSE AND PUB** 📷
490 Dock St, Cedar Key, 32625 • 352.543.8004
- 17 ISLAND HOTEL RESTAURANT** 📷
373 2nd St, Cedar Key, 32625 • 352.543.5111
www.islandhotel-cedarkey.com
- 18 ISLAND ROOM AT CEDAR COVE** 📷
192 2nd St, Cedar Key, 32625 • 352.543.6520
www.islandroom.com
- 19 ROBINSON'S SEAFOOD MARKET & RESTAURANT**
6991 SW SR 24, Cedar Key, 32625 • 352.543.5051
(See **8** for location on map.)
- 20 STEAMERS CLAM BAR AND GRILL** 📷
420 Dock St, Cedar Key, 32625 • 352.543.5142
www.steamerscedarkey.com
- 21 TONY'S SEAFOOD RESTAURANT**
597 2nd St, Cedar Key, 32625 • 352.543.0022
www.tonyschowder.com
- 22 GATHERING TABLE STEAKHOUSE**
116 N. Main St, Chiefland, 32626 • 352.493.1590
- 23 SHRIMP LANDING**
48 US 19 S, Inglis, 34449 • 352.447.5201
- 24 IVY HOUSE RESTAURANT AND CATERING**
108 N Main St, Williston, 32696 • 352.528.5410
- 25 RIVERSIDE INN AT IZAAK WALTON LODGE**
6301 W Riverside Dr, Yankeetown, 34498 • 352.447.2595
www.izaakwaltonlodge.com

TAYLOR COUNTY

- 26 FIDDLER'S RESTAURANT** 📷
1306 Riverside Dr, Steinhatchee, 32359 • 352.498.7427
www.fiddlersrestaurant.com
Scallops, soft shell crab, stone crab
- 27 ROY'S RESTAURANT** 📷
100 1st Ave, Steinhatchee, 32359 • 352.498.5000
Blue crab, cedar key clams and oysters, local scallops
- 28 KATHI'S KRAB SHACK AND MARKET** 📷
202 15th St, East, Steinhatchee, 32359 • 352.498.0605
Crab, shrimp, oysters, fish
- 29 DEAL'S OYSTER HOUSE** 📷
2571 W US Hwy 98, Perry, 32348 • 850.838.3325
Oysters, shrimp, crab • Recycled oyster shell parking lot
- 30 REVELLS OYSTER BAR & GRILL**
4785 W US Hwy 98, Perry, 32347 • 850.584.2555
- 31 WHITNEY'S RESTAURANT**
13950 Beach Rd, Perry, 32348 • 850.578.5788



**LOOK FOR THIS ICON 📷 FOR PHOTO SPOTS ALONG THE BIG BEND SHELLFISH TRAIL.
SHARE YOUR IMAGES AT #FLORIDASHELLFISHTRAIL**

SEAFOOD MARKETS

DIXIE COUNTY

- 1 LOU'S SEAFOOD** 📷
15503 SW Hwy 351, Horseshoe Beach, 32648 • 352.210.2423
www.facebook.com/LousSeafood
Stone crab, blue crab, shrimp, oysters, soft shell crab & scallops
 - 2 COLSON'S SEAFOOD**
320 SE 868 Ave, Old Town, 32680 • 352.542.2083
Stone crab, oysters & sometimes shrimp
 - 3 DEMORY CREEK SEAFOOD (NEXT TO BILL'S FISH CAMP)** 📷
63 SE 219th St, Suwannee, 32692 • 352.354.5125
Hard crabs, oysters, stone crabs & other seasonal seafood
 - 4 RICK'S SEAFOOD**
261 SW 21 St, Cross City, 32628 • 352.498.3819
Crabs, oysters, clams & shrimp
 - 5 CAPO CRAB RANCH** 📷
3775 CR 351, Cross City, 32628 • 352.498.5320
Live blue crabs & soft shell crabs
 - 6 OCEAN FRESH SEAFOOD**
1313 2nd Ave NE, Cross City, 32628 • 352.498.5600
-

LEVY COUNTY

- 7 ADKINS SEAFOOD**
8291 SW CR 347, Cedar Key, 32625 • 352.543.5669
Oysters
 - 8 ROBINSON SEAFOOD**
6991 SW SR 24, Cedar Key, 32625 • 352.543.5051
Oysters, clams & fish
 - 9 SCHOONER BAY SEAFOOD, INC.** 📷
1133 Whiddon Ave, Cedar Key, 32625 • 352.543.5334
Oysters, clams & fish
 - 10 CEDAR KEY SEA FARMS** 📷
7450 SW SR 24, Cedar Key, 32625 • 352.543.5133
 - 11 SALTY NEEDLE QUILT SHOP**
434 2nd St, Cedar Key, 32625 • 352.543.9779
Oysters & clams
 - 12 SOUTHERN CROSS SEA FARMS** 📷
12170 SR 24, Cedar Key, 32625 • 352.543.5980
Oysters & clams
 - 13 DEER CAMP OUTFITTERS**
306 S. Main St, Chiefland, 32626 • 352.490.4868
Oysters & clams
 - 14 SOUTH LEVY MARKET PLACE**
135 Hwy 40 W, Inglis Community Ctr., Inglis, 34449
352.302.1771
 - 15 LOUGHRIDGE BROTHERS SEAFOOD COMPANY**
Yankeetown, FL • 727.639.5286
Shrimp, oysters & fish
 - 16 AWESOME SHRIMP**
Captain Art, Yankeetown • 352.949.3755
Shrimp
-

TAYLOR COUNTY

- 17 PERRY FISH MARKET**
1649 S Byron Butler Pkwy, Perry, 32348 • 850.584.2229
Live blue crab, crab, shrimp, oysters, fish
- 18 HARBOR SEAFOOD MARKET, INC.**
128 S Washington St, Perry, 32348 • 850.584.5064
Crab, shrimp, oysters, fish
- 19 ELLISON'S FISHERY** 📷
1 SW 90th St, Steinatchee, 32359 • 352.498.3504
- 20 KATHI'S KRAB SHACK AND MARKET** 📷
202 15th St, Steinatchee, 32359 • 352.498.0605
Crab, shrimp, oysters, fish

MARINAS

DIXIE COUNTY

- 1 SUWANNEE MARINA, INC.** 📷
49 SE CR 349, Suwannee, 32692 • 352.542.9159
- 2 GATEWAY MARINA (FORMALLY MILLER'S MARINA)** 📷
90 SE 910 Ave, Suwannee, 32692 • 352.542.7349
- 3 HORSESHOE BEACH MARINA** 📷
262 3rd St, Horseshoe Beach, 32648 • 352.498.5405
- 4 GOOD TIMES MARINA & MOTEL** 📷
7022 SW 358 Hwy, Steinhatchee, 32359 • 352.498.8088
Fishing supplies & bait

JEFFERSON COUNTY

- 5 SHIELDS MARINA, INC.** 📷
95 Riverside Dr, St. Marks, 32355 • 850.925.6158
Access to the Gulf of Mexico — fishing, boating, kayaking

LEVY COUNTY

- 6 CEDAR KEY CITY MARINA** 📷
Dock St, Cedar Key, 32625 • 352.543.5478
- 7 CEDAR KEY MARINA II** 📷
12780 SR 24, Cedar Key, 32625 • 352.543.6148
- 8 B'S MARINA & CAMPGROUND** 📷
6621 Riverside Dr, Yankeetown, 34498 • 352.447.5888
- 9 YANKEETOWN MARINA** 📷
15 Hickory Ave, Yankeetown, 34498 • 352.302.4725
- 10 NATURE COAST BIOLOGICAL STATION** 📷
552 1st St, Cedar Key, 32625 • 352.222.8585

TAYLOR COUNTY

- 11 KEATON BEACH MARINA & MOTEL** 📷
20650 Keaton Beach Dr, Perry, 32348 • 850.578.2897
(Impacted by Hurricane Hermine — to reopen in 2017)
- 12 RIVER HAVEN MARINA** 📷
1110 Riverside Dr, Steinhatchee, 32359 • 352.498.0709
www.riverhavenmarina.com
Captains for scalloping & fishing tours, kayak rentals, bait & tackle
- 13 SEA HAG MARINA** 📷
322 Riverside Dr, Steinhatchee, 32359 • 352.498.3008
Captains for scalloping & fishing tours, fishing bait & tackle
- 14 SHELTER COVE MARINA** 📷
412 Riverside Dr, Steinhatchee, 32359 • 352.440.2325
- 15 IDEAL MARINA SUPPLY** 📷
7 1st Ave, Steinhatchee, 32359 • 352.498.5707
www.idealmarinasupply.com
Live & frozen bait



BOAT RAMPS

For more information of where to locate boat ramps throughout the Big Bend Shellfish Trail go to <https://public.myfwc.com/LE/boatramp/public/default.aspx>

BOAT TOURS

Contact local county chamber or tourist office for listings for kayak, canoe and boat rentals

DIXIE COUNTY

SUWANNEE GUIDES & OUTFITTERS

 📷

Manatee Springs State Park, Fanning Springs State Park, and Suwannee River, Suwannee, FL
352.542.8331 • <http://suwanneeguides.com/>
Paddling, birding, wildlife and river cruises

LEVY COUNTY

CAPTAIN DOUG'S TIDEWATER TOURS

 📷

Dock Street — adjacent to City Park and Beach
352.543.9523 or 352.949.1996
www.tidewatertrips.com
Eco & nature boat tours

CEDAR KEY BOAT RENTALS & ISLAND TOURS

 📷

City Dock at Cedar Key Marina
352.231.4435 or 352.278.0065
www.cedarkeyboatrentalsandislandtours.com
Eco & nature boat tours

LOOK FOR THIS ICON 📷 FOR PHOTO SPOTS ALONG THE BIG BEND SHELLFISH TRAIL.
SHARE YOUR IMAGES AT #FLORIDASHELLFISHTRAIL

BAIT & TACKLE

DIXIE COUNTY

- 1 **FLORIDA CRACKER SHRIMP & BAIT CO.** 📷
345 Main St, Horseshoe Beach, 32648 • 352.498.2817
Live shrimp & bait
- 2 **ELLISON'S** 📷
262 Main St, Horseshoe Beach, 32648 • 352.498.5891
Bait
- 3 **PANAMA PAUL'S DISCOUNT MARINE** 📷
110 Main St, Horseshoe Beach, 32648 • 352.498.3148
Fishing supplies & bait
- 4 **LITTLE RED STORE**
1492 SW Hwy 351, Cross City, 32628 • 352.498.1017
Fishing supplies, bait & tackle
- 5 **BILL'S FISH CAMP**
63 SE 219 St, Suwannee, 32692 • 352.542.7086
Live shrimp, bait & tackle

JEFFERSON COUNTY

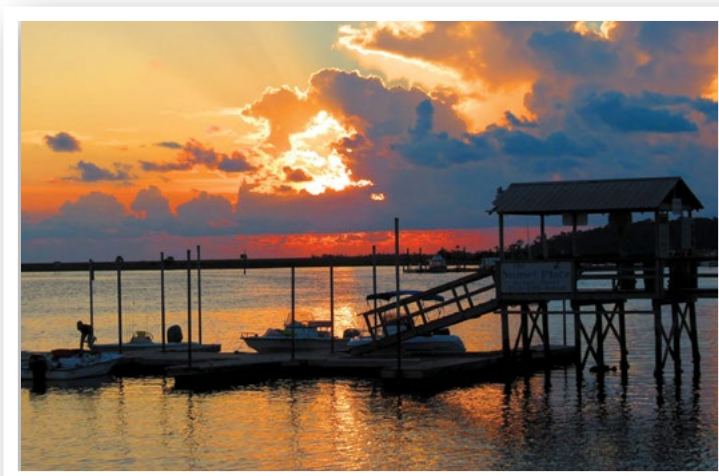
- 6 **BOLANDS COUNTRY STORE & BAIT**
12197 Gamble Rd, Wacissa, 32361 • 850.997.4056
Fishing supplies & bait
- 7 **CAST NEST KING**
22869 Aucilla Landing Rd, Lamont, 32336 • 850.838.0104
Fishing supplies & bait
- 8 **STEWART'S BAIT & TACKLE**
175 S. Jefferson St, Monticello, 32344 • 850.997.2143
Bait & tackle
- 9 **TROPHY CREEK OUTFITTERS & PAWN**
165 Walnut St, Monticello, 32344 • 850.997.4868
Bait & tackle, fishing licenses

LEVY COUNTY

- 10 **CEDAR KEY MARINA II** 📷
12780 SR 24, Cedar Key, 32625 • 352.543.6148
<http://www.cedarkeymarina.net/>
- 11 **KIKO'S BAIT BUCKET** 📷
Dock St., next to Cedar Key Fishing Pier
- 12 **MARINA HARDWARE, INC.** 📷
409 1st St., Cedar Key, 32625 • 352.543.5804
<http://marinahardwarecedarkey.com/>
- 13 **DEER CAMP**
306 S. Main St., Chiefland, 32626 • 352.490.4075
- 14 **HERSHEL'S QUICK STOP**
190 US-19, Otter Creek, 32683 • 352.486.6584
- 15 **CAPTAIN'S COVE OUTFITTERS**
39 CR 40 W, Inglis, 34449 • 352.447.5610
- 16 **HOOK LINE AND SINKER**
144 Hwy 40 W, Inglis, 34449 • 352.447.5477

TAYLOR COUNTY

- 17 **BIG BEND OUTFITTERS**
1589 Carlton Cemetary Rd, Perry, 32348 • 850.584.3953
- 18 **WALTER B'S**
15729 Beach Rd, Perry, 32348 • 850.578.2050
- 19 **WILSON'S BAIT & TACKLE**
1702 S Byron Butler Pkwy, Perry, 32348 • 850.584.6157



LOOK FOR THIS ICON 📷 FOR PHOTO SPOTS ALONG THE BIG BEND SHELLFISH TRAIL.
SHARE YOUR IMAGES AT #FLORIDASHELLFISHTRAIL



Cedar Key Seafood Festival



Fiddler Crab Festival in Steinatchee

FESTIVALS

Join one of the Big Bend's annual festivals and experience local flavor at its best!

DIXIE/TAYLOR COUNTIES

FEBRUARY: FIDDLER CRAB IN STEINHATCHEE

APRIL: HORSESHOE BEACH SEAFOOD FESTIVAL

JEFFERSON COUNTY

JUNE: WATERMELON FESTIVAL

APRIL: MONTICELLO BIKE FESTIVAL

LEVY COUNTY

OCTOBER: CEDAR KEY SEAFOOD FESTIVAL

NOVEMBER: YANKEETOWN SEAFOOD FESTIVAL

TAYLOR COUNTY

**OCTOBER: FLORIDA FOREST FESTIVAL –
WORLD'S LARGEST FREE FISH FRY**

Photographs and images by:

Jeff Cary, Cassandra Key, Kay McCallister, Carol McQueen, Diane Peebles, Carlton Ward, Jr., Eric Zamora

Dixie County Tourist Development Council | Jefferson County Chamber of Commerce | Levy County Visitors Bureau
Taylor County Chamber of Commerce | University of Florida-IFAS

Brochure design:

JS Design Studio